

# Davis Dog Training Club

AKC All Breed Agility Trials, April 4 & 5, 2009

Dixon May Fairgrounds

655 South First St., Dixon, CA 95620

## Set Ups, Check In, Start Times, Walk Through

### Preliminary running

order contingent on move-up entries not yet received. Exhibitors shall be provided armbands or stickers indicating their dog's running order number for this trial. Per AKC rules, the move up deadline is 6 pm on March 30, 2009. Absolutely no move ups for Saturday will be allowed after this time and date. Move ups for Sunday must be given to the Trial Secretary, at the show site, in writing within 15 minutes of the last dog completing the course of Saturday.

Novice B/A Standard and JWW classes will run together by jump heights with division B running before division A. Excellent B/A Standard and JWW classes will run together by jump heights with division B running before division A. The preferred classes will run intermingled with the

regular classes by height. Each class will be briefed separately. Lunch breaks will be at the Judge's discretion. A warm-up area, consisting of a regulation agility jump will be provided for all exhibitors.

**Set Ups** No exhibitor set ups before 3 pm. The area on the North lawn from Dixon Blvd to Vacaville Way is reserved for the show committee.

**Parking** Daily parking inside the fairgrounds close to the rings is by permit only. Vehicles with permits may NOT park in front of the Grandstand – this is a fire lane. **All other vehicles must park in the regular parking lot by the building.** You may drive in to unload but all cars must be moved to the regular parking lot by 7:30 am each day.

**Absolutely no vehicles may drive in to load or unload while the rings are running.**

### Food and beverages

Dannie's Catering will be onsite selling breakfast and lunch items and beverages.

**Check in** will begin at 7:00 am on Saturday and Sunday. Armbands may be picked up at the score table each morning.

**Judging will begin** on Saturday and Sunday at 8:00 am.

**Walk through** will begin as soon as the Judge has approved the course. This will be at approximately 7:30 am. Open and Novice, all heights will walk the course together prior to their class being judged. Excellent Standard and JWW will be split into four groups as follows:

Group 1: 20

Group 2: 24/26/4/8

Group 3: 12

Group 4: 16

No canopy set ups or marking off space around the rings before 3 pm.

### Directions:

#### From I-80 west in Dixon:

Take 113 South towards Dixon.

**From I-80 east**, take the Dixon Ave/A Street exit and go right on A Street. Turn right on First Street. The fairgrounds are 3 blocks south on your left side. Go past the office/main entrance drive and turn left into the south end of the fairgrounds.

The rings will be outdoors on grass and measure 100' x 120'. Bring shade.

## All About the Height Cards

All dogs regardless of jump height must either: present a height card at check, send a copy of their height card with entry to this show, or be measured. Dogs that do not have an AKC height card or who

have not provided a copy of their height card to the trial secretary must be measured BEFORE their first run of the weekend.

Cindy Macklin will measure dogs without height cards near the score table at

approximately 7:30 am on Saturday and Sunday and for 10 minutes at the top of each hour unless she is running her dog or course walking.

---

### Entry Information

The dog specific information was emailed to you at the time the entry was processed. This may have been several weeks ago. If you need to verify the classes entered email [lorie@abbadogs.com](mailto:lorie@abbadogs.com)

Lorie Abbott

Trial Secretary

925-294-8965

---

# Class Order, Height Order, Which Judge when

## Saturday: 247 dogs and 480 runs

Susan McClair will judge all Standard

Candy Gaiser will judge all JWW Classes

## Sunday: 233 dogs and 447 runs

Susan McClair will judge all JWW Classes

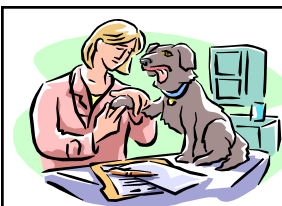
Candy Gaiser will judge all Standard Classes

---

### On Call Veterinarian

UC Davis Small Animal Clinic (530) 752-1393 or (530) 752-0186  
1 Shields Ave., Davis, CA (generic address)

Directions: Take I-80 towards Sacramento. Take 113 north towards Woodland. Take the first exit (Hutchison Drive) and bear right (east) on Hutchison Drive. Turn right at the first stop light (LaRue Road). Follow LaRue Road to the first right turn (Garrod Drive). Follow Garrod Drive to the stop sign. After stopping, proceed directly ahead. The client parking lot entrance is on your right. Client parking is free as long as you park in a designated patient parking space. Client parking cannot accommodate vehicles that require more space than a passenger car. There are three different reception stations and it is important to come to the station mentioned when you made your appointment. Reception station 3 is in the building on your left as you drive toward the parking lot and reception stations 1 and 2 are in the main hospital building which is to the west of the parking lot. Drive time approximately 15 minutes.



### Dr. Cindy Mobile Veterinary Service

Cindy Norman, DVM will be onsite each day for your veterinary needs. If you can't locate her ask at the score table and we will point you in her direction.

**Dogs will be judged** from the lowest armband number in each class to the highest armband number in each class.

### Class Order—Saturday

#### Standard Ring

Excellent, Open, Novice

#### JWW Ring

Open, Novice, Excellent.

### Class Order—Sunday

#### Standard Ring

Excellent, Open, Novice

#### JWW Ring

Open, Novice, Excellent

### Height Order

Saturday—20, 24, 26, 4, 8, 12, 16

Sunday—24, 26, 4, 8, 12, 16, 20

### RV and Tent Campers

Those on the set up list may begin arriving at 10:00 am on Friday. All others may begin arriving at 3:00 pm.



## Volunteers

Davis Dog Training Club would like to thank you in advance for volunteering to work at this year's event. To show our appreciation, each volunteer working a minimum of two classes will receive lunch and raffle tickets.

White boards will be located near each ring. If you see a blank space and have free time just write your name in the blank.

## Potty Areas

Do not allow your dog to potty on ANY manmade object. This includes trashcans, ring stakes, canopy legs, table legs, gate boards, planters, benches, chairs, light posts or any other manmade object.

Your dog may relieve himself on trees, grass, dirt and the like. Failure to follow these directions may result in a bench committee hearing. Remember to pick up after you dog.

---

## The 411 on Conflicts

We understand there are times when conflicts among rings arise. Every effort will be made to accommodate conflicts, however, it is the exhibitor's responsibility to check in, mark their dogs as a conflict if necessary and walk courses when assigned. We can reset bars for exhibitors "caught" in other rings BUT we cannot hold any course waiting for conflicts.

### Excerpt from the AKC Agility Judge newsletter dated June 2008.

As discussed in the *Regulations for Agility Trials* and the *AKC Agility Judges Guidelines*, conflicts pertain to conflicts occurring at the agility trial,

not to conflicts of a personal nature that may cause the exhibitor to arrive late or need to leave early from a trial.

Examples of conflicts that should be accommodated: handler running multiple dogs, handler or dog that is scheduled to be in two different rings at the same time, and when a handler or dog is entered in multiple venues held on the same show grounds, (exhibitors volunteering in other rings).

Examples of issues that are **NOT** conflicts include but are not limited to: arriving at the trial site late and

missing either the run or walk through, having a personal appointment or duty to attend to, or any other scheduling conflict issue of a personal nature. This is also true for exhibitors who wish to move themselves up in the running order so that they may leave the trial early or down in the running order so that they may arrive late. Handlers may not be moved up or down in the running order due to these types of personal issues.

Handlers who earn qualifying scores while violating this policy will be excused and lose those legs.

## It's Really a Conflict, So How Do I Move My Dog?

Exhibitors may NOT move their own dogs at the gate. Moves at the gate can only be made one of the following persons:

Any Judge of record for this weekend's event

Connie Bartlett, Melinda Balint, Lorie Abbott, Kathie Leggett.

Ring Coordinators: Pat White, Nicole Young. Gate Steward assigned to that class.

### Agility Terms Word Search

ABBA Dogs	A Frame	Chute
Clean Run	Climb	Contact
Course	Davis DTC	Dogwalk
Double Q	Excellent	FAST
Go	Judge	Jump
Jumpers	Leash	Novice
Open	Qualify	Ribbon
Scribe	Secretary	Standard
Table	Teeter	Timer
Touch	Tunnel	Weave

S	Q	W	F	M	X	R	V	H	E	T	D	O	G	W	A	L	K	J	U
N	O	V	I	C	E	K	S	T	A	N	D	A	R	D	U	X	B	U	W
M	Q	R	Q	S	C	H	U	T	E	T	O	U	C	H	E	H	L	M	A
H	T	G	B	O	E	G	D	U	J	Q	R	N	A	H	E	W	N	P	O
Y	N	M	P	W	U	L	T	S	A	F	S	F	F	O	P	E	N	S	
C	E	X	I	D	R	B	Q	C	L	Y	T	I	M	E	R	M	R	O	D
O	L	X	L	P	Y	A	A	B	B	A	D	O	G	S	S	X	A	Y	O
N	L	E	C	N	R	U	Y	Z	D	P	N	B	C	T	W	F	J	E	U
T	E	O	U	S	A	E	L	B	A	T	C	L	E	A	N	R	U	N	B
A	C	G	S	R	T	U	M	Q	T	B	P	O	M	W	R	T	P	B	L
C	X	Q	F	E	E	Q	V	P	Z	V	J	Q	A	X	C	C	T	T	E
T	E	N	N	B	R	U	F	L	D	Z	U	N	R	J	O	Z	L	U	Q
A	U	S	P	Z	C	A	X	A	I	A	M	O	F	E	U	G	J	H	N
V	W	G	H	M	E	L	V	Y	O	D	P	B	A	B	R	L	B	E	O
S	M	C	A	A	S	I	W	E	A	V	E	B	Z	I	S	L	C	U	R
U	K	X	Q	Y	S	F	A	B	X	J	R	I	Y	R	E	E	N	F	D
X	I	D	Y	D	F	Y	K	C	C	V	S	R	O	C	C	A	N	T	B
R	A	T	T	V	R	E	T	E	E	T	I	C	B	S	Y	S	H	F	R
C	O	C	R	P	V	W	T	U	N	N	E	L	E	O	P	H	U	Z	W
L	T	C	M	W	T	O	E	I	I	I	K	D	Z	D	S	Y	Y	G	I

Saturday						
Standard Regular	8	12	16	20	24	26
Novice A	0	2	2	0	1	0
Novice B	0	4	5	10	2	0
Open	4	3	3	6	10	0
Excellent A	2	4	4	11	10	2
Excellent B	11	26	26	40	14	4

Saturday					
Standard Preferred	4	8	12	16	20
Novice	0	2	0	0	5
Open	0	1	2	2	1
Excellent A	1	0	2	2	2
Excellent B	1	4	2	4	1

Saturday						
JWW Regular	8	12	16	20	24	26
Novice A	0	2	2	0	1	0
Novice B	0	1	6	9	1	0
Open	4	6	1	8	12	1
Excellent A	1	3	5	7	8	0
Excellent B	12	28	28	41	14	5

Saturday					
JWW Preferred	4	8	12	16	20
Novice	1	0	1	1	3
Open	0	1	1	1	1
Excellent A	0	2	2	1	2
Excellent B	3	4	4	5	2

Sunday						
Standard Regular	8	12	16	20	24	26
Novice A	0	1	1	1	1	0
Novice B	1	4	6	8	2	0
Open	2	4	3	5	6	0
Excellent A	2	4	1	11	9	0
Excellent B	12	25	26	38	13	3

Sunday					
Standard Preferred	4	8	12	16	20
Novice	0	2	0	2	3
Open	0	0	1	2	1
Excellent A	1	1	1	2	3
Excellent B	1	4	2	4	1

Sunday						
JWW Regular	8	12	16	20	24	26
Novice A	0	1	1	1	1	0
Novice B	1	1	7	6	1	0
Open	2	6	0	8	9	0
Excellent A	1	3	2	7	6	0
Excellent B	13	27	30	40	13	3

Sunday					
JWW Preferred	4	8	12	16	20
Novice	1	0	1	3	1
Open	0	2	0	1	1
Excellent A	0	3	2	1	2
Excellent B	3	4	3	6	3