

Vizsla Club of Northern California

AKC All Breed Agility Trials, January 31 & February 1, 2009

Sonoma County Fairgrounds

1350 Bennett Valley Rd., Santa Rosa, CA 95404

Set Ups, Check In, Start Times, Walk Through

Preliminary running

order contingent on move-up entries not yet received. Exhibitors shall be provided armbands or stickers indicating their dog's running order number for this trial. Per AKC rules, the move up deadline is 6 pm on Monday, January 26, 2009. Absolutely no move ups for Saturday will be allowed after this time and date. Move ups for Sunday must be given to the Trial Secretary, at the show site, in writing within 15 minutes of the last dog completing the course of Saturday.

Novice B/A Standard, JWW and FAST classes will run together by jump heights with division B running before division A. Excellent B/A Standard, JWW and FAST classes will run together by jump heights with division B running before division A. The preferred classes will run intermingled with the

regular classes by height. Each class will be briefed separately. Lunch breaks will be at the Judge's discretion. A warm-up area, consisting of a regulation agility jump will be provided for all exhibitors.

Set Ups No exhibitor set ups in / under the covered arena before 3 pm on Friday unless you are part of the set up crew.

RV Parking You will receive a parking pass in the U.S. mail the week before the show. We never know in advance if the fairgrounds will allow RV parking on the grass. When you arrive follow the example of the other RVs.

Food and beverages

A fairgrounds food vendor will be open on Saturday and Sunday.

Check in will begin at 7:00 am on Saturday and Sunday. Armbands may be picked up at the score table each morning.

Judging will begin on

Saturday and Sunday at 8:00 am.

Walk through will begin as soon as the Judge has approved the course. This will be at approximately 7:30 am. Open and Novice, all heights will walk the course together prior to their class being judged. Excellent Standard and JWW will be split into three groups as follows:

Group 1: 20

Group 2: 4/8/24/26

Group 3: 12/16

Excellent FAST: all heights will walk together.

The order will be walk run, walk run, etc.

Unless you have a conflict, i.e. showing in another ring or working, you **MUST** walk with your group.

No set ups or marking off space around the rings before 3 pm.

Directions: Take highway 101 to Santa Rosa. Exit onto highway 12 eastbound towards Sonoma. Exit highway 12 at the South E Street/ Downtown exit. Upon reaching the surface street, Bennett Valley Rd., you will come to a stoplight and just in front of you on your right will be the Sonoma County Fairgrounds.

If you are coming by highway 12 westbound, take the Downtown exit and turn left at the stoplight. This will lead you to the entrance to the fairgrounds.

The rings will be on dirt, under cover and will measure approximately 100' x 90'.

All About the Height Cards

All dogs, regardless of jump height, must either: present a height card at check, send a copy of their height card with entry to this show, or be measured. Dogs that do not have an AKC height card or who

have not provided a copy of their height card to the trial secretary must be measured **BEFORE** their first run of the weekend.

Measurement of dogs without height cards will take place near the score

table at approximately 7:30 am on Saturday and Sunday and between classes when time allows.

Tammy Domico will measure for height cards.

Entry Information

The dog specific information was emailed to you at the time the entry was processed. This may have been several weeks ago. If you need to verify the classes entered email lorie@abbadoqs.com

Lorie Abbott

Trial Secretary

925-294-8965

Class Order, Height Order, Which Judge When

Saturday: 199 dogs and 464 runs

Tammy Domico will judge all Standard Classes and Novice FAST.

Debby Wheeler will judge all JWW Classes, Open & Excellent FAST.

Sunday: 185 dogs and 431 runs

Tammy Domico will judge all JWW Classes, Excellent & Open FAST.

Debby Wheeler will judge all Standard Classes & Novice FAST.

Dogs will be judged from the lowest armband number in each class to the highest armband number in each class.

Class Order—Saturday

Standard Ring

Open, Excellent, Novice, Novice FAST

JWW Ring

Excellent, Open, Novice, Excellent FAST, Open FAST.

Class Order—Sunday

Standard Ring

Open, Excellent, Novice, Novice FAST

JWW Ring

Excellent FAST, Open FAST, Excellent, Open Novice JWW.

Height Order

Saturday—Excellent Std and Excellent JWW

16, 12, 4, 8, 24, 26, 20

All other classes will run small to tall

Sunday—Excellent Std and Excellent JWW

20, 26, 24, 8, 4, 12, 16

All other classes will run tall to small

On Call Veterinarian

Emergency Animal Hospital
– Dr. Hoskins

1946 Santa Rosa Ave.,
Santa Rosa, CA 95407
(707) 544-1647

Start out going East on Bennett Valley Rd. Turn slight left onto Maple Ave. Turn left onto Santa Rosa Ave. Approximate distance from fairgrounds to Animal Hospital is 1.5 miles.

RV and Tent Campers

Those on the set up list may begin arriving at 10:00 am on Friday. All others may begin arriving at 3:00 pm.



Volunteers

Vizsla Club of Northern California would like to thank you in advance for volunteering to work at this year's event. To show our appreciation, each volunteer will receive a voucher in the amount of \$2 for each class worked. Vouchers are valid at the snack bar or towards entry fees at future Vizsla Club agility trials. Vouchers will be distributed by the ring coordinators, Nicole Young and Pat White.

Dry erase boards will be located near each ring. If you see a blank space and have free time just write your name in the blank. **ONLY WRITE ON THE DRY ERASE BOARDS WITH DRY ERASE PENS. DO NOT USE MARKIES, SHARPIES OR ANY OTHER PENS.**



The 411 on Conflicts

We understand there may be legitimate ring conflicts. Every effort will be made to accommodate conflicts, however, it is the exhibitor's responsibility to check in, mark their dogs as a conflict if necessary and walk courses when assigned. We can reset bars for exhibitors "caught" in other rings BUT we cannot hold any course waiting for conflicts.

It's Really a Conflict, So How Do I Move My Dog?

Exhibitors may NOT move their own dogs at the gate. Moves at the gate can only be made one of the following persons:

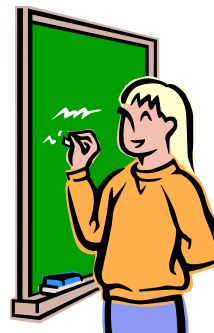
Any Judge of record for this weekend's event

Lorie Abbott, Pam Hetrick, Karin Parker, Laura Finco

Ring Coordinators: Nicole Young, Pat White

Gate Steward assigned to that class.

class, speak with one of these people and they will move your dog.



If you have a legitimate conflict or less than 5 dogs separate two or more dogs run by the same handler in the same

You Make The Call



According to the AKC Incident / Action Matrix revised on January 2, 2009 which is/are the correct response(s) to the following situation:

Incident: Dog either runs out of the ring and attacks another dog or into the ring and attacks another dog.

- A. No blood was drawn so this is considered a non-incident and no action is taken.
- B. Dog excused by Judge and Judge completes Dog on Dog Attack from AEDSQ3.
- C. Event Committee must consider Disqualification of the dog and if the three requirements are met for the dog to be disqualified the Committee

completes the Disqualified by Event Committee form AEDSQ4.

- D. Lorie gets to spend the day explaining to the Judge and Show Committee how to complete the AKC required paperwork.
- E. Lorie gets to spend the day on the phone with the AKC Representative.
- F. Lorie gets to spend the day attempting to calm the involved parties.
- G. Lorie gets to spend the next week following up on the incident.

Answer will be posted at the check in table at the show. Hint: All but one answer is correct.

Bonus question: Name the three things that must be true before the Show Committee may Disqualify a Dog.

Potty Areas

Do not allow your dog to potty on ANY manmade object. This includes trashcans, ring stakes, canopy legs, table legs, gate boards, planters, benches, chairs or any other manmade object. Anywhere inside the covered arena.

Your dog may relieve himself on trees, grass, dirt and the like. Failure to follow these directions may result in a bench committee hearing. Remember to pick up after you dog.

Saturday						
Standard Regular	8	12	16	20	24	26
Novice A	0	1	1	1	1	0
Novice B	2	3	2	5	4	0
Open	2	6	3	5	4	0
Excellent A	2	6	3	11	5	0
Excellent B	10	22	26	25	19	2

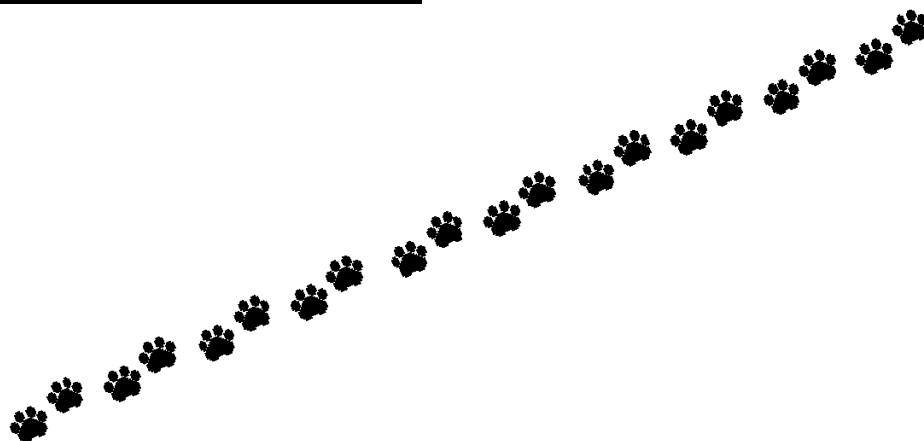
Saturday					
Standard Preferred	4	8	12	16	20
Novice	0	0	1	1	0
Open	0	1	1	2	1
Excellent A	0	1	2	1	3
Excellent B	0	2	2	2	2

Saturday						
JWW Regular	8	12	16	20	24	26
Novice A	0	1	1	1	1	0
Novice B	0	2	2	2	4	0
Open	3	6	4	7	4	0
Excellent A	1	2	3	6	5	0
Excellent B	12	26	26	31	19	2

Saturday					
JWW Preferred	4	8	12	16	20
Novice	0	0	1	1	0
Open	0	1	3	2	1
Excellent A	0	3	1	0	1
Excellent B	0	2	2	3	2

Saturday						
FAST Regular	8	12	16	20	24	26
Novice A	0	1	1	0	0	0
Novice B	2	2	3	1	2	0
Open	1	1	5	10	2	0
Excellent A	0	2	1	5	3	0
Excellent B	2	5	6	6	4	1

Saturday					
FAST Preferred	4	8	12	16	20
Novice	0	0	0	1	0
Open	0	1	0	0	0
Excellent A	0	1	0	1	2
Excellent B	0	0	0	1	1



Sunday						
Standard Regular	8	12	16	20	24	26
Novice A	0	1	1	2	1	0
Novice B	1	1	1	2	5	0
Open	2	3	2	7	5	0
Excellent A	2	6	2	10	3	0
Excellent B	9	20	25	25	19	2

Sunday					
Standard Preferred	4	8	12	16	20
Novice	0	0	0	1	0
Open	0	1	0	2	1
Excellent A	0	1	1	2	4
Excellent B	0	2	2	2	2

Sunday						
JWW Regular	8	12	16	20	24	26
Novice A	0	0	1	2	1	0
Novice B	0	0	1	1	4	0
Open	3	3	2	9	4	0
Excellent A	0	2	4	5	4	0
Excellent B	11	24	24	29	19	2

Sunday					
JWW Preferred	4	8	12	16	20
Novice	0	0	1	0	0
Open	0	1	1	3	1
Excellent A	0	2	1	0	3
Excellent B	0	2	2	3	3

Sunday						
FAST Regular	8	12	16	20	24	26
Novice A	0	1	1	1	0	0
Novice B	2	0	0	2	0	0
Open	0	2	5	9	1	0
Excellent A	0	2	2	5	3	0
Excellent B	1	5	7	7	7	1

Sunday					
FAST Preferred	4	8	12	16	20
Novice	0	0	0	1	0
Open	0	1	0	0	0
Excellent A	0	1	0	1	3
Excellent B	0	0	0	1	1

