

Davis Dog Training Club

AKC All Breed Agility Trials, April 10 & 11, 2010
Dixon May Fairgrounds
655 South First St., Dixon, CA 95620

Set Ups, Check In, Start Times, Walk Through

Preliminary running order contingent on move-up entries not yet received. Exhibitors shall be provided armbands or stickers indicating their dog's running order number for this trial. Per AKC rules, the move up deadline is 6 pm on April 5, 2010. Absolutely no move ups for Saturday will be allowed after this time and date. Move ups for Sunday must be given to the Trial Secretary, at the show site, in writing within 15 minutes of the last dog completing the course of Saturday.

Novice B/A Standard and JWW classes will run together by jump heights with division B running before division A. Excellent B/A Standard and JWW classes will run together by jump heights with division B running before division A. The preferred classes will run intermingled with the

regular classes by height. Each class will be briefed separately. Lunch breaks will be at the Judge's discretion. A warm-up area, consisting of a regulation agility jump will be provided for all exhibitors.

Set Ups No exhibitor set ups before 3 pm. The area on the North lawn from Dixon Blvd to Vacaville Way is reserved for the show committee.

Parking You may drive in to unload but all cars must be moved to the regular parking lot by 7:30 am each day.

Absolutely no vehicles may drive in to load or unload while the rings are running.

Food and beverages

Dannie's Catering will be onsite selling breakfast and lunch items and beverages.

Check in will begin at 7:00 am on Saturday and Sunday. Armbands may

be picked up at the score table each morning.

Judging will begin on

Saturday and Sunday at 8:00 am.

Walk through will begin as soon as the Judge has approved the course. This will be at approximately 7:30 am. Open and Novice, all heights will walk the course together prior to their class being judged. Excellent Standard and JWW will be split into four groups as follows:

Red Group: 20

Blue Group: 4/8/24/26

Green Group: 12

Yellow Group: 16

The order will be walk run, walk run, etc. Each group will walk immediately before they run.

Unless you have a conflict, i.e. showing in another ring or working, you **MUST** walk with your group.

No canopy set ups or marking off space around the rings before 3 pm.

Directions:

From I-80 west in Dixon:

Take 113 South towards Dixon.

From I-80 east, take the Dixon Ave/A Street exit and go right on A Street. Turn right on First Street. The fairgrounds are 3 blocks south on your left side. Go past the office/main entrance drive and turn left into the south end of the fairgrounds.

The rings will be outdoors on grass and measure 100' x 120'. Bring shade.

All About the Height Cards

All dogs, regardless of jump height, who are under two years of age and do not have a temporary height card or are over two years of age and do not have a permanent height card must be measured

prior to their first run of the weekend. It is the exhibitor's responsibility to ensure their dog is measured before their first run.

Measurement of dogs will take place near the score table on Saturday and Sunday and for 10 minutes at the top of each hour. If you need to be measured "raise the flag". Cindy Macklin will measure.

Entry Information

The dog specific information was emailed to you at the time the entry was processed. This may have been several weeks ago. If you need to verify the classes entered email lorie@abbadogs.com

Lorie Abbott

Trial Secretary

925-294-8965

Class Order, Height Order, Which Judge when

Saturday: 221 dogs and 418 runs

Melodie Sudick will judge all Standard

Kylie Bourke will judge all JWW Classes

Sunday: 201 dogs and 381 runs

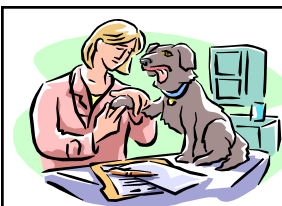
Melodie Sudick will judge all JWW Classes

Kylie Bourke will judge all Standard Classes

On Call Veterinarian

UC Davis Small Animal Clinic (530) 752-1393 or (530) 752-0186
1 Shields Ave., Davis, CA (generic address)

Directions: Take I-80 towards Sacramento. Take 113 north towards Woodland. Take the first exit (Hutchison Drive) and bear right (east) on Hutchison Drive. Turn right at the first stop light (LaRue Road). Follow LaRue Road to the first right turn (Garrod Drive). Follow Garrod Drive to the stop sign. After stopping, proceed directly ahead. The client parking lot entrance is on your right. Client parking is free as long as you park in a designated patient parking space. Client parking cannot accommodate vehicles that require more space than a passenger car. There are three different reception stations and it is important to come to the station mentioned when you made your appointment. Reception station 3 is in the building on your left as you drive toward the parking lot and reception stations 1 and 2 are in the main hospital building which is to the west of the parking lot. Drive time approximately 15 minutes.



Dr. Cindy Mobile Veterinary Service

Cindy Norman, DVM will be onsite each day for your veterinary needs. If you can't locate her ask at the score table and we will point you in her direction.

Volunteers

Davis Dog Training Club would like to thank you in advance for volunteering to work at this year's event. To show our appreciation, each volunteer working a minimum of two classes will receive lunch and raffle tickets.

White boards will be located near each ring. If you see a blank space and have free time just write your name in the blank.

Dogs will be judged from the lowest armband number in each class to the highest armband number in each class.

Class Order—Each Day

Standard Ring

Open, Excellent, Novice

JWW Ring

Excellent, Open, Novice

Height Order—Saturday

Excellent Standard & JWW

20, 24, 26, 4, 8, 12, 16

Novice & Open—Small to Tall

Preferred dogs will run before the Regular dogs.

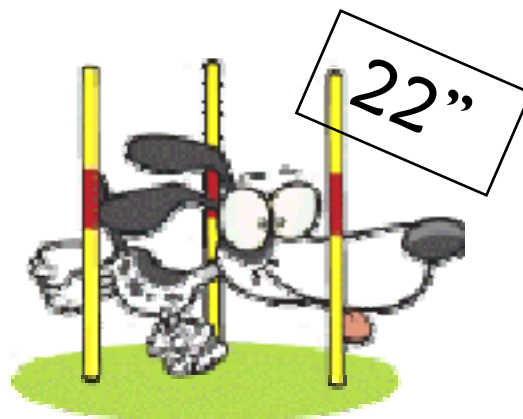
Height Order—Saturday

Excellent Standard & JWW

Sunday—24, 26, 4, 8, 12, 16, 20

Novice & Open—Tall to Small

Preferred dogs will run after Regular dogs.



Potty Areas

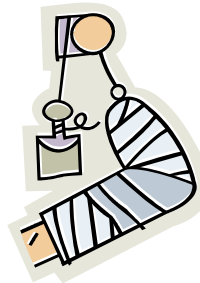
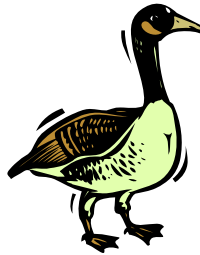
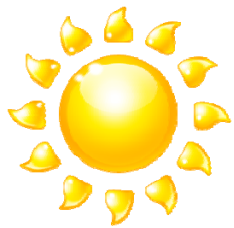
Do not allow your dog to potty on ANY manmade object. This includes trashcans, ring stakes, canopy legs, table legs, gate boards, planters, benches, chairs, light posts or any other manmade object.

Your dog may relieve himself on trees, grass, dirt and the like. Failure to follow these directions may result in a bench committee hearing. Remember to pick up after your dog.

Will The Show Be Cancelled If.....

The Agility Trial will be held rain, clouds, fog, sun, snow, heat, cold, smog, mud, hail, wind (unless it's strong enough to blow the dogs off the A-frame), smoke from a distance forest fire, judge's flight cancelled, judge too sick to get on the plane, judge clunked her head and bled all over the trial secretary's trailer (her head had to be glued back with doggie surgical glue like Humpty Dumpty), hot air balloons landing in the middle of the show grounds, power outage, food vendor doesn't show up, geese walking through the ring while a dog was competing and another dog was on the line, exhibitor breaking their leg on course—you get the point. All these "things" have happened at ABBA Dogs shows and still the trial continued.

Did you know that if the show was to be cancelled that refunds would NOT be given? It's true so really no one wants the show cancelled.



Daily Parking

Vehicles may drive in to unload and load each day. All vehicles MUST be moved to the regular parking lot by 8:00 AM. Vehicles may enter to load AFTER judging is finished for the day. This rule is for the safety of the dogs and exhibitors.

The regular parking lot is next to the building on the South end of the fairgrounds. Additional parking is across the street from the fairgrounds.



RV and Tent Campers

Those on the set up list may begin arriving at 10:00 am on Friday. All others may begin arriving at 3:00 pm.



Welcome mixed breeds!

Saturday						
Standard Regular	8	12	16	20	24	26
Novice A	0	3	1	1	0	0
Novice B	2	4	3	4	5	0
Open	1	4	4	15	1	0
Excellent A	2	3	4	11	4	0
Excellent B	8	20	30	33	11	4

Saturday					
Standard Preferred	4	8	12	16	20
Novice	0	0	1	1	4
Open	0	2	1	1	5
Excellent A	0	1	3	3	3
Excellent B	0	2	0	1	1

Saturday						
JWW Regular	8	12	16	20	24	26
Novice A	0	3	1	1	0	0
Novice B	3	5	3	6	4	0
Open	1	3	2	13	5	0
Excellent A	0	2	7	6	3	0
Excellent B	10	20	30	36	10	4

Saturday					
JWW Preferred	4	8	12	16	20
Novice	0	0	1	0	5
Open	0	2	0	0	4
Excellent A	0	1	4	2	3
Excellent B	1	2	1	2	2

Sunday						
Standard Regular	8	12	16	20	24	26
Novice A	0	2	0	2	1	0
Novice B	2	2	2	4	3	0
Open	2	4	3	8	1	0
Excellent A	1	4	4	10	5	0
Excellent B	8	17	26	38	11	4

Sunday					
Standard Preferred	4	8	12	16	20
Novice	0	0	1	0	4
Open	0	2	0	1	5
Excellent A	0	2	2	3	3
Excellent B	0	2	0	1	1

Sunday						
JWW Regular	8	12	16	20	24	26
Novice A	0	2	0	2	1	0
Novice B	2	2	3	4	2	0
Open	1	3	1	8	5	0
Excellent A	0	2	6	6	3	0
Excellent B	9	18	26	41	11	4

Sunday					
JWW Preferred	4	8	12	16	20
Novice	0	0	1	0	5
Open	0	2	0	0	3
Excellent A	0	1	2	2	2
Excellent B	0	2	1	2	2