

MT. DIABLO DOG TRAINING CLUB

AKC All Breed Agility Trials, March 6 & 7, 2010

Dixon May Fairgrounds

655 South First St., Dixon, CA 95620

Set Ups, Check In, Start Times, Walk Through

Preliminary running

order contingent on move-up entries not yet received. Exhibitors shall be provided armbands or stickers indicating their dog's running order number for this trial. Per AKC rules, the move up deadline is 6 pm on Monday, March 1, 2010. Absolutely no move ups for Saturday will be allowed after this time and date. Move ups for Sunday must be given to the Trial Secretary, at the show site, in writing within 15 minutes of the last dog completing the course of Saturday.

Novice B/A Standard, JWW and FAST classes will run together by jump heights with division B running before division A. Excellent B/A Standard, JWW and FAST classes will run together by jump heights with division B running before division A. The preferred classes will run intermingled with the

regular classes by height. Each class will be briefed separately. Lunch breaks will be at the Judge's discretion. A warm-up area, consisting of a regulation agility jump will be provided for all exhibitors.

Set Ups No exhibitor set ups before 3 pm on Friday unless you are part of the set up crew.

RV Parking You will receive a parking pass in the U.S. mail the week before the show. We never know in advance if the fairgrounds will allow RV parking on the grass. When you arrive follow the example of the other RVs.

Food and beverages

Dannie's Catering will be onsite Saturday and Sunday.

Check in will begin at 7:00 am on Saturday and Sunday. Armbands may be picked up at the score table each morning.

Judging will begin at 8:00 am each day.

Walk through will begin as soon as the Judge has approved the course. This will be at approximately 7:30 am. Open and Novice, all heights will walk the course together prior to their class being judged. Excellent Standard and JWW will be split into four groups as follows:

Red Group: 20 (split)

Blue Group: 4/8/24/26

Green Group: 12

Yellow Group: 16

The order will be walk run, walk run, etc. Each group will walk immediately before they run.

Unless you have a conflict, i.e. showing in another ring or working, you **MUST** walk with your group.

Preferred heights will run before regular heights each day.

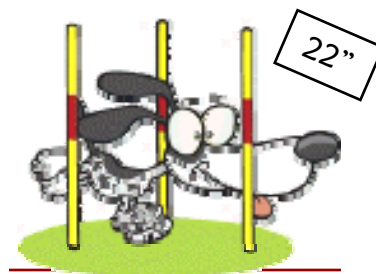
No set ups or marking off space around the rings before 3 pm.

Directions:

From I-80 west in Dixon, take 113 South towards Dixon.

From I-80 east, take the Dixon Ave/A Street exit and go right on A Street. Turn right on First Street. The fairgrounds are 3 blocks south on your left side. Go past the office/main entrance drive and turn left into the south end of the fairgrounds.

Both rings will be on the South Lawn.



Entry Information

The dog specific information was emailed to you at the time the entry was processed. This may have been several weeks ago. If you need to verify the classes entered email lorie@abbadogs.com

Lorie Abbott

Trial Secretary

925-294-8965

All About the Height Cards

All dogs, regardless of jump height, who are under two years of age and do not have a temporary height card or are over two years of age and do not have a permanent height card must be measured

prior to their first run of the weekend. It is the exhibitor's responsibility to ensure their dog is measured before their first run.

Measurement of dogs will take place near the score table at approximately 7:30 am on Saturday and Sunday and in between classes when Cindy Macklin is not otherwise occupied.

Class Order, Height Order, Which Judge When

Saturday: 606 runs

Cindy Macklin will judge all Standard Classes and Novice FAST.

Susan McClair will judge All JWW Classes, Excellent & Open FAST.

Sunday: 581 runs

Cindy Macklin will judge all JWW Classes, Excellent & Open FAST.

Susan McClair will judge all Standard Classes and Novice FAST.

Dogs will be judged from the lowest armband number in each class to the highest armband number in each class.

Class Order—

Standard Ring both days

Open, Excellent, Novice Standard then Novice FAST

JWW Ring—Saturday

Excellent, Open, Novice JWW then Excellent FAST, Open FAST

JWW Ring—Sunday

Excellent FAST, Open FAST then JWW Excellent Open, Novice

On Call Veterinarian

UC Davis Small Animal Clinic (530) 752-1393 or (530) 752-0186

1 Shields Ave., Davis, CA (generic address)

Directions: Take I-80 towards Sacramento. Take 113 north towards Woodland. Take the first exit (Hutchison Drive) and bear right (east) on Hutchison Drive. Turn right at the first stop light (LaRue Road). Follow LaRue Road to the first right turn (Garrod Drive). Follow Garrod Drive to the stop sign. After stopping, proceed directly ahead. The client parking lot entrance is on your right. Client parking is free as long as you park in a designated patient parking space. Client parking cannot accommodate vehicles that require more space than a passenger car. There are three different reception stations and it is important to come to the station mentioned when you made your appointment. Reception station 3 is in the building on your left as you drive toward the parking lot and reception stations 1 and 2 are in the main hospital building which is to the west of the parking lot. Drive time approximately 15 minutes.

Height Order

Saturday—Excellent Standard and Excellent JWW

4, 8, 26, 24, 20, 16, 12

All other classes will run small to tall

Sunday—

Excellent Standard

16, 12, 8, 4, 24, 26, 20

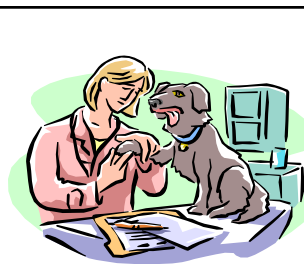
Excellent JWW

20, 16, 12, 8, 4, 24, 26

All other classes will run tall to small

Dr. Cindy Mobile Veterinary Service

Cindy Norman, DVM will be onsite each day for your veterinary needs. If you can't locate her ask at the score table and we will point you in her direction.



Volunteers

Mt. Diablo DTC would like to thank you in advance for volunteering to work at this year's event. To show our appreciation, each volunteer will receive a voucher in the amount of \$2 for each class worked. Vouchers are valid at any vendor present at this event or towards entry fees at future Mt. Diablo DTC agility trials. Vouchers will be distributed by the ring coordinators, Nicole Young and Kelly Chaffin.

Dry erase boards will be located near each ring. If you see a blank space and have free time just write your name in the blank.




Potty Areas & Parking

Do not allow your dog to potty on ANY manmade object. This includes trashcans, ring stakes, canopy legs, table legs, gate boards, planters, benches, chairs or any other manmade object.

Your dog may relieve himself on trees, grass, dirt and the like. Failure to follow these directions may result in a bench committee hearing. Remember to pick up after you dog. Any dog who relieves himself on an

agility equipment inside or outside of the ring or on any trial secretary equipment will be required to clean up after their dog and pay a \$10 fee to the equipment owner.


Campers



Those on the set up list may begin arriving at 10:00 am on Friday. All others may begin arriving at 3:00 pm.

Daily Parking

No parking or driving will be allowed on Dixon Blvd. This is the walkway between the two lawns and will be blocked with cones. Saturday and Sunday mornings you may drive in to unload. All vehicles must be moved to the regular parking lot by 7:30 am. **Absolutely no vehicles may drive in to load or unload while the rings are running.**



Saturday						
Standard	8	12	16	20	24	26
Regular						
Novice A	0	2	0	3	3	0
Novice B	1	4	2	5	7	0
Open	2	2	3	12	6	0
Excellent A	1	2	5	17	7	0
Excellent B	9	26	32	42	19	6

Saturday					
Standard	4	8	12	16	20
Preferred					
Novice	0	0	0	2	2
Open	0	1	2	2	1
Excellent A	0	0	1	3	2
Excellent B	0	2	1	3	3

Saturday						
JWW	8	12	16	20	24	26
Regular						
Novice A	0	2	0	3	3	0
Novice B	1	2	4	7	5	0
Open	1	4	0	13	7	0
Excellent A	0	0	9	15	9	0
Excellent B	11	27	33	44	19	6

Saturday					
JWW	4	8	12	16	20
Preferred					
Novice	0	0	0	3	1
Open	1	0	2	1	4
Excellent A	0	1	1	2	2
Excellent B	2	2	1	4	3

Saturday						
FAST Regular	8	12	16	20	24	26
Novice A	0	1	0	3	1	0
Novice B	0	1	0	6	5	0
Open	0	5	5	9	5	0
Excellent A	0	2	2	6	3	0
Excellent B	4	4	11	19	5	2

Saturday					
FAST Preferred	4	8	12	16	20
Novice	0	2	1	1	3
Open	0	0	0	0	0
Excellent A	0	1	0	0	0
Excellent B	0	0	0	1	2



Sunday						
Standard Regular	8	12	16	20	24	26
Novice A	0	2	0	2	3	0
Novice B	1	4	1	5	6	0
Open	3	2	3	10	4	0
Excellent A	1	3	7	15	6	0
Excellent B	9	27	31	35	17	6

Sunday					
Standard Preferred	4	8	12	16	20
Novice	0	0	0	2	2
Open	0	1	1	3	2
Excellent A	0	0	0	3	2
Excellent B	0	3	1	3	2

Sunday						
JWW Regular	8	12	16	20	24	26
Novice A	0	2	0	2	3	0
Novice B	1	1	4	5	3	0
Open	1	4	1	12	7	0
Excellent A	0	2	10	13	7	0
Excellent B	11	28	32	39	16	6

Sunday					
JWW Preferred	4	8	12	16	20
Novice	0	0	0	2	0
Open	1	0	1	1	2
Excellent A	0	1	0	2	2
Excellent B	1	3	1	4	2

Sunday						
FAST Regular	8	12	16	20	24	26
Novice A	0	1	0	2	1	0
Novice B	0	0	0	4	5	0
Open	0	4	6	9	5	0
Excellent A	0	2	4	8	4	0
Excellent B	4	6	14	21	7	2

Sunday					
FAST Preferred	4	8	12	16	20
Novice	0	2	0	1	1
Open	0	0	0	1	1
Excellent A	0	0	0	0	0
Excellent B	0		0	1	2